

# 01 Quick Start

---

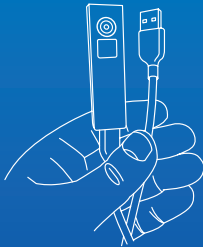
Thank you for purchasing a pmd 3D development kit.  
Let's start developing!



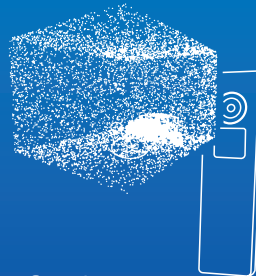
1. Download & install the software  
[pmdtec.com/software/](http://pmdtec.com/software/)



2. Read the safety instructions  
(turn this card over)



3. Plug in the cable



4. Start!

# Safety Instructions



**Complies with FDA performance standards for laser products except for conformance with IEC 60825-1 Ed. 3., as described in Laser Notice No. 56, dated May 8, 2019**

**Compliant product labeling not affixed to the product due to size restrictions. Compliant labeling is provided here within the user information**

No scheduled maintenance is necessary to keep the product in compliance.

No service is allowed by the user. Unit is to be serviced or repaired only by factory authorized technicians. Please contact pmd directly if you require servicing.

The product and embedded laser is never to be operated if the unit is defective or the cover or seal is broken or damaged.

Product is not to be opened. Disassembly of product may result in eye or skin exposure to laser radiation.

Use the device in accordance with its designated use. Installation and connection must comply with applicable national and international standards.

Do not operate the device with a power supply other than a standard USB3.0 power supply.

**Caution** – use of controls or adjustments or performance of procedures other than those specified herein may result in hazardous radiation exposure